



KX-NTV150 IP communication camera
KX-NTV160 IP video door phone

Where voice meets vision



KX-NTV150

Communication IP camera

Built-in speaker, microphone and camera

Record audio with HD video

Integration with Panasonic PBX

Connect to mobile devices

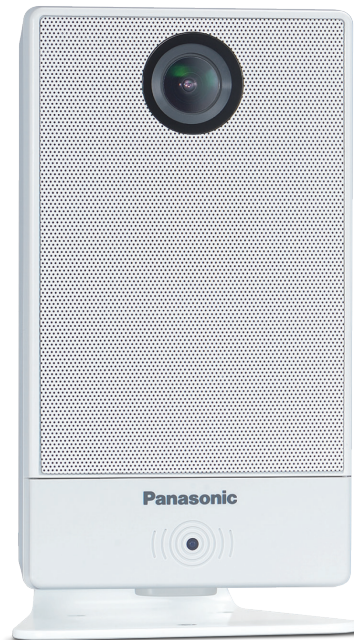
Built-in Wi-Fi (requires optional AC adapter)

Motion, voice and tampering detection

Up to 10 multiple connections

Built-in PoE

Remote camera and door control



**Seamless
video and audio
communication.**



Panasonic PBX integration

Ability to connect to Panasonic PBX systems (KX-NS and KX-NSX) to become part of your overall communication suite.

Combined voice and video

An embedded web viewer and recording features permit users to collect information or to engage with visitors and employees seamlessly using both visual and audio channels.

Mobility

Monitor, record and interact remotely thanks to the ability to connect via smartphones and tablets.

Simple setup

Due to wireless connectivity, the KX-NTV150 is both portable and extremely easy to set up in any location.

KX-NTV160

IP video door phone

Ideal for use in sheltered outdoor areas
(IP43 protection)

Built-in speaker, microphone and camera

Record audio with HD video

Integration with Panasonic PBX

Connect to mobile devices

Motion, voice and tampering detection

Up to 10 multiple connections

Built-in PoE

Remote camera and door control



**Smart visual
and voice
communication.**

In addition to Panasonic PBX integration, combined voice and video, and mobility features, the KX-NTV160 also offers:

External capabilities

Thanks to its I/O port, the KX-NTV160 can be integrated with other external devices such as alarms.

Night-time visibility

Thanks to its warm-white LED light source, the KX-NTV160 can be used effectively in dark or unlit environments.

Wherever your business, whatever its needs

The brand new KX-NTV series has been designed in line with Panasonic's mission to deliver exceptional technology across all areas of business communication.

From warehouse, factory and shop floors to hospitals, leisure clubs and reception areas, such world-leading technology is helping companies to build better business connections for the future.



Healthcare

The KX-NTV series integrates with Panasonic PBX systems to identify opportunities for improved care, and deliver actionable insight to caregivers and patients.



Warehouse, factories and retail

Manufacturing, storage and retail facilities can benefit from the video monitoring and communication elements of the KX-NTV series.

Video surveillance features can be utilised to make quality control processes faster and more efficient.

Real-time distribution of video content allows for remote coaching and improved productivity.

Motion, voice and tampering detection triggers provide security camera capabilities.



Reception areas

Both models encourage an efficient, seamless and friendly way to receive visitors, even if you aren't in the vicinity.

Employees can engage with guests visually and through voice from anywhere in the building, thanks to snapshot, video and audio recording offerings.

Entrance doors can then be opened remotely using your Panasonic phone.



Anywhere, anytime

To meet the increasing business need for remote working and hot-desking, the KX-NTV range can connect to mobile phones and tablets to offer interaction on the move, wherever and whenever it's needed.



KX-NTV150 and KX-NTV160 in detail

The new and innovative KX-NTV series ushers in a new era for business communication systems.

Delivering video and voice, surveillance and recording features, and the ability to connect to mobile devices and Panasonic's PBX systems, these multi-usage models offer superior engagement, wherever and whenever you need it.

General features		KX-NTV150	KX-NTV160
Dimension (excluding protruding sections)	W x H x D (mm)	70.1 x 123.5 x 33.1	70.3 x 131.2 x 34
Weight		170g	260g
Body colour		White	Silver
Body material		PC	ABS/aluminum
Power source	Uses AC adapter (optional parts)	AC input: 100-240V, 50/60Hz DC output: 9V Optional AC adapter: KX-A239	-
	Uses PoE	Based on IEEE802.3af, class 2	
Power consumption		Max. 3.9W	Max. 3.2W
Ambient temperature	Operating range	0°C~40°C	-10°C~50°C
	Storage range	-10°C~50°C	
Ambient humidity	Operating range	20%~90% (no condensation)	
	Storage range	20%~90% (no condensation)	
Installation method		Placed on desk, fixed by stand	Wall mount
Wireless		Wi-Fi (802.11b/g/n, 2.4GHz) supported	-
Ethernet port		10Base-T/100BaseTx, RJ-45 connector, PoE (IEEE802.3af) supported	
Audio features			
Microphone		Built-in	
Speaker		Built-in	
Echo canceller		Includes half-duplex echo canceller	
Codec		Support G.711, G.722 (only for SIP), G.729a (only for SIP). Setting by configuration menu on WEB access → select u-law or a-law, G.722 (only for SIP), G.729a (only for SIP)	
Lens features			
Type		Fixed-focal	
Focal length		f/2.8	
Aperture		f/1.8	
Focus range		∞~0.2 m	
Field of view (image aspect=4:3) (H x V x D)		92 x 70 x 115	
Field of view (image aspect=16:9) (H x V x D)		92 x 52 x 106	

KX-HDV430

SIP deskphone

The KX-NTV series can be used with Panasonic's high-end KX-HDV430 deskphone to provide a complete solution for your business communications.

When connected to the KX-NTV cameras, the KX-HDV430 offers multiway video and voice communication, and remote surveillance, thanks to its own built-in video camera and colour LCD touchscreen monitor.



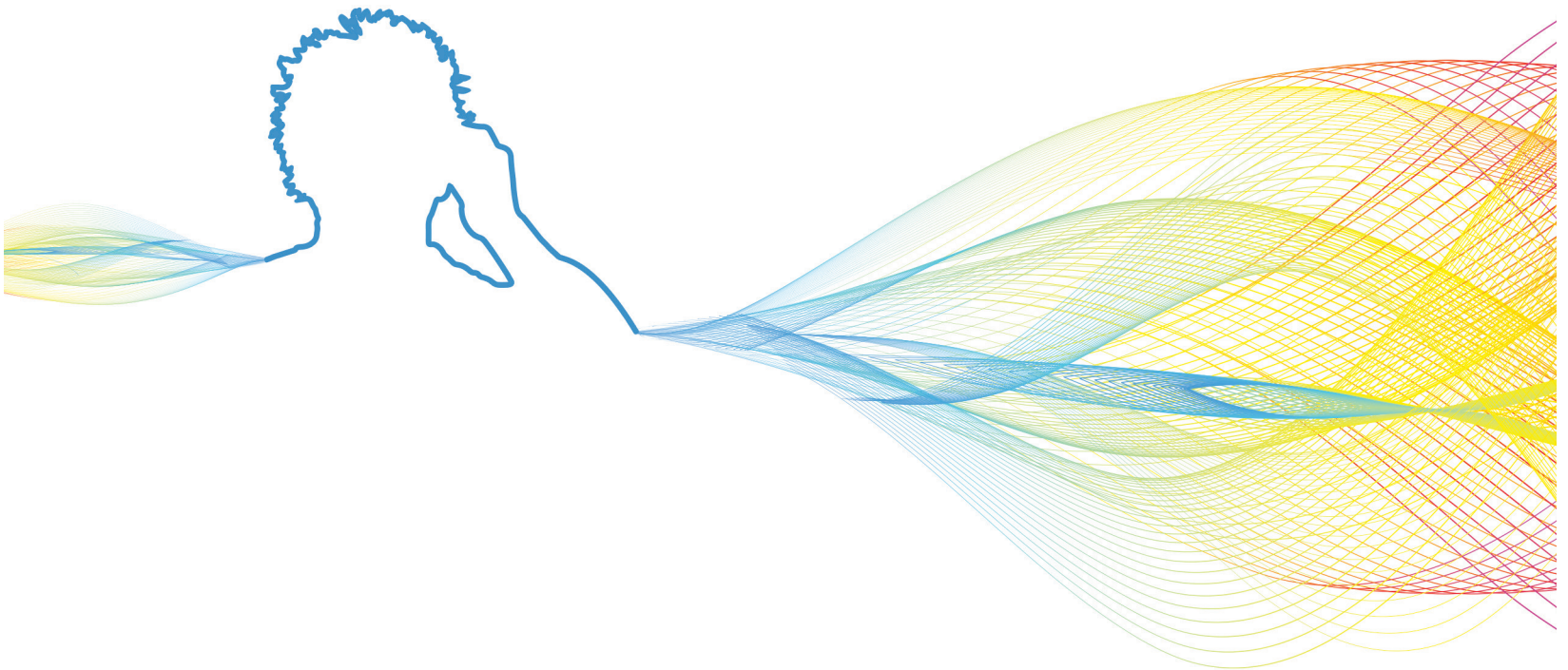
Phone features	KX-HDV430
LCD screen	4.3" colour TFT LCD touch panel
Flexible function keys	Up to 40 flexible functions keys*1
Built-in Bluetooth®	Yes
IP features	
SIP accounts	16
Embedded web server	Yes
Audio features	
HD voice	Yes
Full duplex speakerphone	Yes
BroadSoft compatible*2	Yes
Video features	
Video codec	H.264
Video call format	QCIF, QVGA, CIF, VGA, 720p
Frame rate selection	Up to 30fps
Ability to link with IP camera	Yes

*1 With optional expansion module. *2 Basic call feature, missed calls display, N-way conference, Busy Lamp Field, call centre, call park notification, click-to-call, Feature Key Synchronisation, shared call appearance, BroadSoft Xsi, BroadSoft Presence, BroadSoft Xsi Phonebook.



Ready to learn more about the KX-NTV IP
communication camera and video door phone?

For full details visit
business.panasonic.eu



We reserve the right to make reasonable changes to models, dimensions and colours, as well as to make modifications that bring our products in line with state-of-the-art technology and production.

Panasonic System Communications Company Europe (PSCEU)
Communication Systems Business Unit
Panasonic House, Willoughby Road
Bracknell, Berkshire RG12 8FP
United Kingdom
+44 (0)207 022 6530

1_00113682_FEB2016_V10