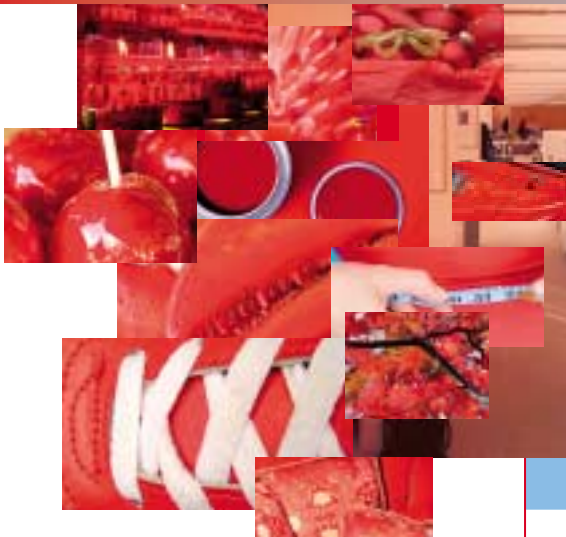


you can
Canon

Large Format
Print Solutions

LFP SOLUTIONS



CAD & GIS

For Computer Aided Design and Geographical Information Systems

We Speak Image

Canon Large Format Printers for CAD or GIS.

Render the finest lines and the most precise graphics with Canon's superb range of Large Format Printers for Technical Environments.

Whether you're rendering complex 3D CAD drawings, creating large-scale photo realistic visuals of your designs, or mapping complex geographic data, Canon's Large Format Printers provide the precision prints and deadline-beating performance you need.

Big benefits with Canon

We've been helping companies involved in the CAD and GIS market for years. Canon's iPF610 and iPF710 printers feature innovations specifically engineered to generate the results you demand. Canon's 5-colour reactive ink technology is created to enable you to generate prints with smooth curves, fine lines, small text and the most detailed graphs. And Canon's FINE technology for bubble-jet printers and L-COA image processing technology ensure prints at deadline-beating speeds.

Where precision
is paramount.

Canon's Large Format Print Solutions for CAD & GIS



iPF610



iPF710

The range

For true print flexibility, Canon offers the imagePROGRAF iPF610 and imagePROGRAF iPF710 giving you the choice of 24" (A1) and 36" (A0) large format print capabilities. Each device is simple to operate with full support for CAD applications with HPGL/2 and HP RTL compatibility, ensuring a seamless introduction into your CAD or GIS environment.



imagePROGRAF

Technical perfection for:

- **Electronic Design Automation (EDA)**
- **Geographical Information Systems (GIS)**
- **Mechanical CAD**
- **Architecture**
- **Engineering**
- **Construction**

Canon's Large Format Print Solutions for Production



Print big with precision

There's no room for error in the type of work you do. That's why you need a Large Format Printer that's designed specifically to produce the finest lines, smoothest curves and most striking graphical representations attainable.

Accurate printing

Canon's 5-colour dye/pigment reactive ink system gives the results you need using a wide colour gamut. Fine lines, small text and highly detailed graphics are produced with incredible accuracy and sharpness. 1200 dpi rendering and a minimum line width of 0.02mm is consistently achieved with an ink placement precision of just $\pm 0.1\%$.

Productive printing

Quality and speed sit side-by-side with the iPF610/iPF710. You can produce A1 print on the iPF610 in just 33 seconds and A0 prints on the iPF710 in a mere 56 seconds.

Simple to operate

Device operation is simple thanks to a large LCD panel which provides clear menu-driven controls for all functions. A thoughtfully designed fan system ensures the quietest of operation.

Flexible media handling

A huge variety of media options are available providing added diversity to your final output. A 4-way paper feed, consisting roll, cassette, and 2 Manual feeds is offered with the iPF610. The iPF710 offers 3-way feeding via a roll and 2 manual feeds.

Potential media misalignment is virtually eradicated thanks to Auto-skew correction which automatically adjusts for any skew in orientation and feeds the paper correctly.



Economical and reliable

As you would expect from Canon, reliable performance is a given and for added peace of mind our imagePROGRAF printers come with 1 years print head warranty.

A new feature for the CAD models is the Economy printing mode designed specifically for printing quick, low cost draft prints for checking the layout etc before final print. The ink consumption is reduced by approximately 50% when compared to conventional draft mode and although the print will be slightly lighter coloured it does enable the end-user to produce a much cheaper layout draft.

The mode is available in Plain paper / Draft mode (colour mode: Colour, Monochrome, Colour (CAD), Monochrome (BK ink) and Monochrome Bitmap) and is added as a checkbox in the settings menu.

For all your CAD/GIS applications

The iPF610/iPF710 supports the common languages used in your market for seamless integration with the way you work. HP-GL/2 and HP/RTL are supported, and an HDI driver is also included for Windows applications.

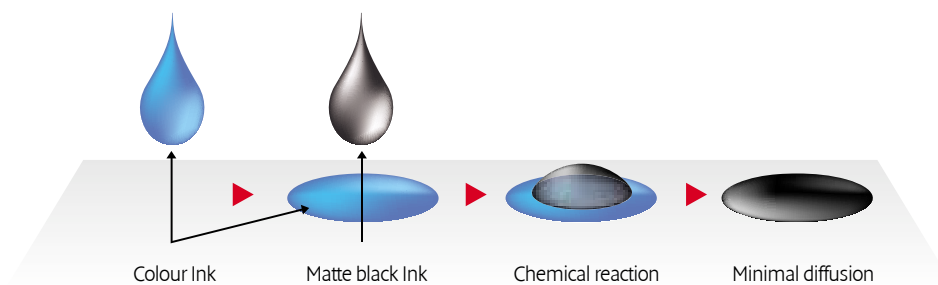
Architects, engineers and construction firms can produce plans in exceptional detail with precise line rendering - whether during the initial selling, design or production phases of a project.

Mechanical CAD engineers can create photorealistic visualisations of their plans in applications such as AutoCAD, Mechanical Desktop or Pro/Engineer and bring them to life quickly with exceptional quality on media up to 36".

GIS specialists can render complex 'what-if' scenarios using maps, seismic analysis data or images from satellites. Even with the huge file sizes generated, the iPF610/iPF710 can effortlessly handle your requirements with accurate, predictable colour and exceptional line rendering.

Focussed on your business to make a big difference

The innovative features included within the iPF610/iPF710 have been designed to help you bring your best work to light. Look forward to exceptional accuracy, print after print consistency and highly productive performance.

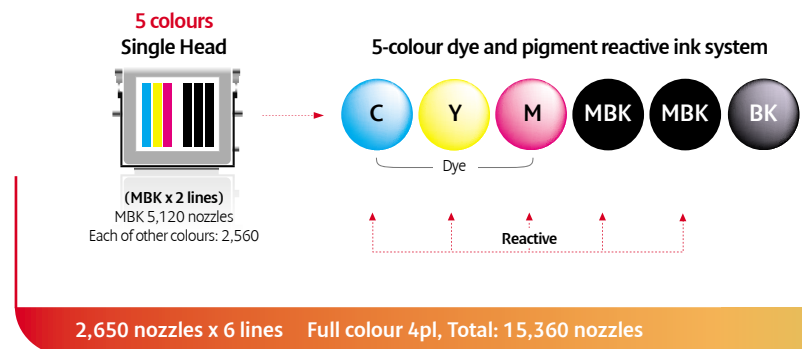


Reactive ink technology

Canon's iPF610/iPF710 features a 5-colour dye/pigment reactive ink system designed specifically for CAD and GIS applications. This unique formulation improves ink adhesion to the media and minimises colour "bleeding". When black ink intersects with a coloured area (for example, words printed on a coloured background), the black and cyan inks induce a chemical reaction that prevents black from bleeding into the colours. This means clearer text, smoother curves and sharp fine lines – even on uncoated technical papers. Using reactive inks also improves scratch and marker resistance so prints are far more durable than those printed with conventional dye inks.

Smooth graduations across all media

The iPF610/iPF710 utilises two types of black ink for the best possible results on all types of media. For photo-type media, a black ink (BK) is used and for high contrast prints on matt paper, a matt black (MBK) is used. This process ensures smooth graduations across every media type and is highly efficient as the relevant ink is automatically selected for each media type.





Canon's FINE technology uses ink bubbles that are formed at the top of the nozzle to separate and eject the ink.



Print with FINE technology

To deliver faithful image expression, ink droplets must be extremely small and precisely distributed. When droplets become microscopic however, image quality is affected by problems such as uneven droplet size and placement on the paper. Conventional printing systems compensate by making multiple passes for each line but this adds significantly to print times.

Canon's FINE (Full Photolithograph Inkjet Nozzle Engineering) overcomes this problem without needing to make multiple passes, producing bi-directional printing at incredible speeds. An innovated ink-nozzle manufacturing method results in precisely uniform droplets and outstanding photo-quality print performance.



L-COA for unbeatable productivity

Providing the optimal balance between high productivity and high quality is Canon's Large Format Printer Common Architecture (L-COA). L-COA helps your iPF610/iPF710 carry out the most complex print jobs - where files can often exceed 200MB - with ease.

Innovations that
help you win
new business.

The best way to see the bigger picture

Bring your most complex designs, plans, charts and maps to life in exceptional detail with Canon's specialist CAD&GIS Large Format Printers.

Overview

iPF710

5 colour dye/pigment reactive ink technology

for the sharpest lines, smoothest curves and most accurate graphs

1200 x 1200 dpi and 4pl with minimum line width of 0.02mm

Wide colour gamut with media-dependent black and matt black inks for the best results

Fast production speeds ensure you can deliver prints quickly whenever needed

Borderless printing (up to 36")

Large LCD control panel makes operation quick and simple

Full support for CAD applications and HPGL/2 and HP RTL compatibility

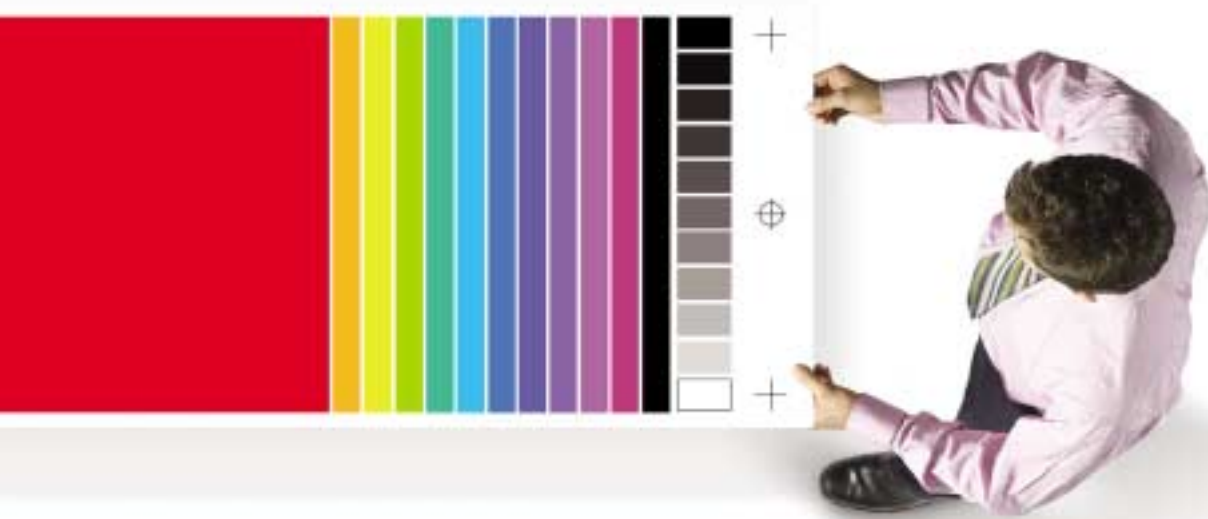
Economy Printing Mode

Auto Skew Correction for trouble-free printing

Extensive media compatibility for a diversity of applications



iPF610



Canon Media & Ink

Media matters

More choice and better quality for you and your customers comes courtesy of Canon's exclusive range of specialist media. Designed for Large Format Printing applications we offer 40 high quality specialist options for Proofing, CAD&GIS, Fine Art, Photography and Production sectors.

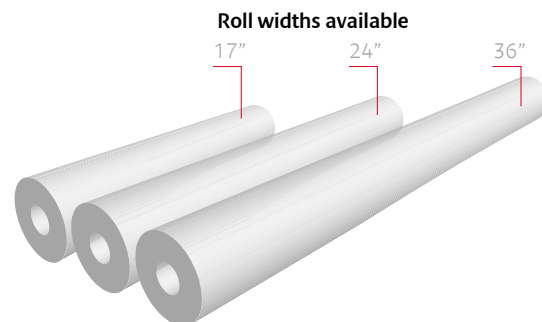
Using Canon media ensures your design and print workflow process is undertaken with products designed to work in harmony for the highest possible performance levels. The entire Canon media range is also supported with ICC profiles and preset printer settings for quick, predictable and trouble-free operation.

For CAD & GIS applications there are specialist media's available with various roll widths.

Quality results with Canon inks

We're constantly looking to fine-tune the quality of our inks and thereby the quality of your prints. That's why we've selected a specialist formulation of pigment and dye ink that has been designed to give the finest results possible for the applications you use. If you demand the sharpest lines, the most accurate visualisations and the most stunningly detailed graphs, make sure you choose inks that are designed for the task at hand.

Lines and graphs never looked better with Canon Media and Ink.



Software designed to expand your opportunities

When you work with Canon you work with a company that carefully considers how you run your business. That means people who understand how you operate, products designed to get the job done and added value software equipped to maximise your business opportunities.



Effortless control

Ultimate control comes courtesy of Canon's flexible imagePROGRAF Printer Driver. An "easy mode" allows you to use Canon's pre-defined settings for speed and simplicity of use. Switch to "advanced mode" however and you can adjust drying times, colour settings and manage your own ICC profiles.

Page set-up provides pure flexibility allowing customised page sizes if required and a best-fit option for each media is selectable. Select the watermark feature and you can protect the rights of your images. For enhanced workflow, pre-defined settings can be created using hot folders.

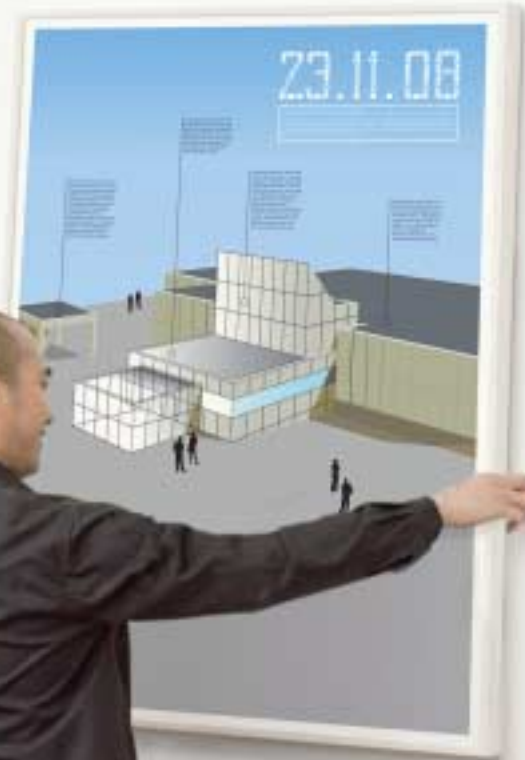
A maintenance facility allows you to adjust the media feed, do a nozzle check, clean the print heads, check the queue and carry out other timesaving procedures.

Precision with HDI Driver

Standard Windows drivers will make raster representations of print data which can result in imprecise printing which could have serious consequences. Canon's HDI driver however, makes a Vector representation of the data, whereby points are defined mathematically. This ensures lines and curves are represented with absolute accuracy - essential for use with CAD applications such as AutoDesk AutoCAD.

Create incredible posters

It's also possible to use your iPF610/iPF710 for entirely different means. Opt for Canon's PosterArtist 2007 software and you can use it to create incredible borderless posters, signs and displays. PosterArtist also gives you the ability to "size-up" Microsoft applications, such as Excel spreadsheets of project plans, in just a few simple steps.



All the detail
you need.

LARGE FORMAT PRINT SOLUTIONS

Explore huge
possibilities with Canon.



imagePROGRAF



PosterArtist

you can
Canon

Canon Inc.
www.canon.com

Canon Europa N.V.
www.canon-europe.com

English-UK Edition 0116W785 -
5026173423052
Code © Canon Europa N.V., 2007 (0108)

Canon (UK) Ltd
Woodhatch, Reigate
Surrey RH2 8BF
Telephone No: 01737 220000
Facsimile No: 01737 220022
www.canon.co.uk

Canon Ireland
Arena Road, Sandyford
Industrial Estate
Dublin 18, Ireland
Telephone No: 01-2052400
Facsimile No: 01-2958141
www.canon.ie